



### 产品特性 Product features

- 无间隙预紧设计
- 自动调节装配间隙
- 自润滑免维护
- 消除振动和噪音
- Clearance-free and preload design
- Adjustable fitting gap
- Maintenance-free
- Shock absorbing and no noise

### 结构设计 Structure design

CSB-CPB<sup>®</sup> 无间隙预紧塑料轴承特殊设计装配后轴承径向和轴向可产生预紧力实现零间隙配合，自动调节轴与轴承间隙；降低机构的振动和运行噪音。

CSB-CPB<sup>®</sup> clearance-free and reloaded plastic bearings can be preloaded in radius and axial directions after fitted in housing, Auto-adjustable the fitting gap with the preload design;The special design bearings can absorbed shock and noise.

### 材料设计 Material design

CSB-CPB<sup>®</sup> 无间隙预紧塑料轴承采用了耐磨专家材料CSB-EPB13，使得塑料轴承在确保预紧力的同时具有极好的耐磨性能。当然，CSB也可提供CSB-EPB18材料制成塑料轴承。

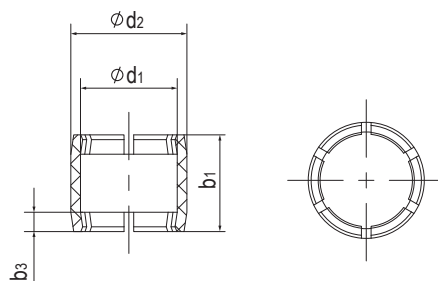
CSB-CPB<sup>®</sup> clearance-free and reloaded plastic bearings is made from the professional wear resistance material CSB-EPB13 which provides good wear resistance and excellent elastic feature. CSB-EPB18 material is available for the preload plastic bearings.

### 安装设计 Assembly design

CSB-CPB<sup>®</sup> 无间隙预紧塑料轴承采用较小的压入力即可装配到座孔中。标准座孔推荐H7公差，标准轴推荐h9公差。

CSB-CPB<sup>®</sup> clearance-free and reloaded plastic bearings easy to be pressed into the housing by low pressure.The recommended housing tolerance is H7 and axial tolerance is h9.

### CPB预紧力直筒轴承 Preload plain bearings



产品编码 Part No.:

**CPB-0608-06**

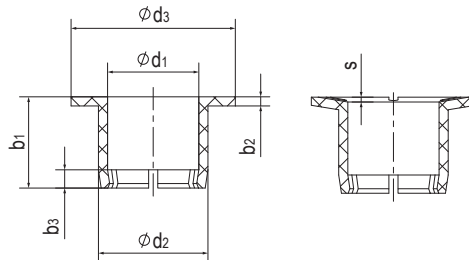
高度 Length  
 外径 Outside diameter  
 内径 Inner diameter

座孔 Housing: H7 轴 Shaft: h9

产品编码 Part No.	d <sub>1</sub> [mm]	d <sub>1</sub> 公差 After Fitting [mm]	d <sub>2</sub> [mm]	b <sub>1</sub> [h13] [mm]	b <sub>3</sub> [mm]
CPB-0608-06	6	+0.020/+0.068	8	6	2
CPB-0810-08	8	+0.025/+0.083	10	8	2

\*d<sub>1</sub>公差为压入标准H7座孔（符合ISO3547-1）后公差 \*Tolerance d<sub>1</sub> after fitting into housing H7 (ISO3547-1)

### CPBF预紧力法兰轴承 Preload flange bearings



产品编码 Part No.:

**CPBF-1012-10**

高度 Length  
 外径 Outside diameter  
 内径 Inner diameter  
 法兰设计 Flange design

座孔 Housing: H7 轴 Shaft: h9

产品编码 Part No.	d <sub>1</sub> [mm]	d <sub>1</sub> 公差 After Fitting [mm]	d <sub>2</sub> [mm]	d <sub>3</sub> [mm]	b <sub>1</sub> [h13] [mm]	b <sub>2</sub> [h13] [mm]	b <sub>2</sub> [mm]	s [± 0.1] [mm]
CPBF-1012-10	10	+0.025/+0.083	12	18	10	1	2	0.53
CPBF-1214-12	12	+0.032/+0.102	14	20	12	1	2	0.53
CPBF-1416-12	14	+0.032/+0.102	16	22	12	1	2	0.53

\*d<sub>1</sub>公差为压入标准H7座孔（符合ISO3547-1）后公差 \*Tolerance d<sub>1</sub> after fitting into housing H7 (ISO3547-1)

### CPB预紧力塑料轴承安装方式 Preload plastic bearings installation method

